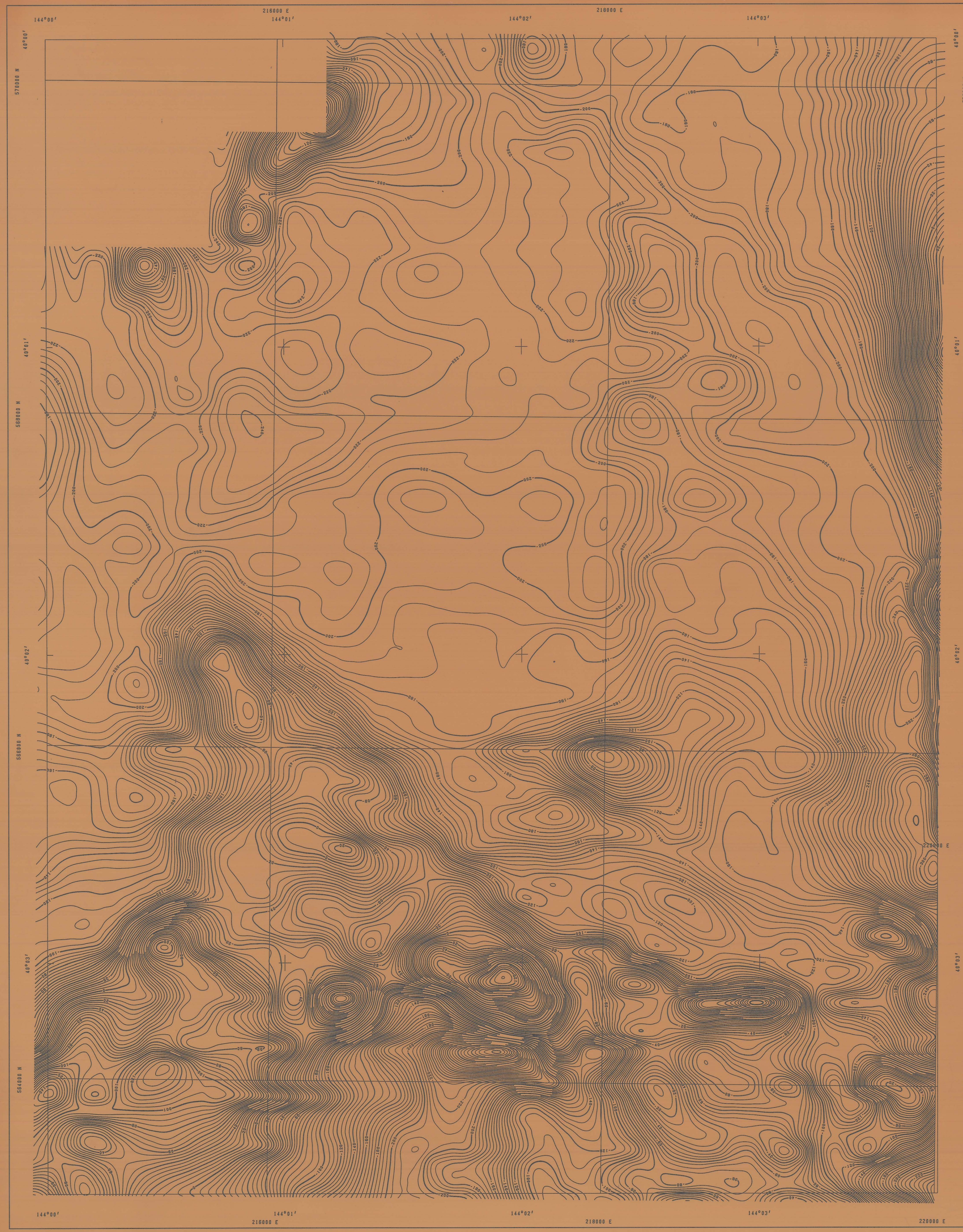


REDA 1985
00000
Nov. 1981

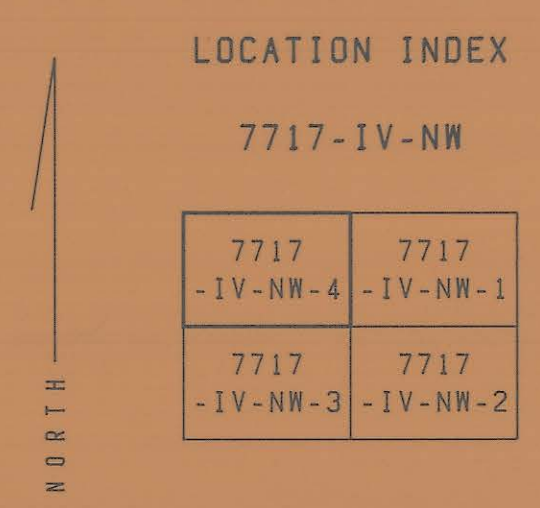
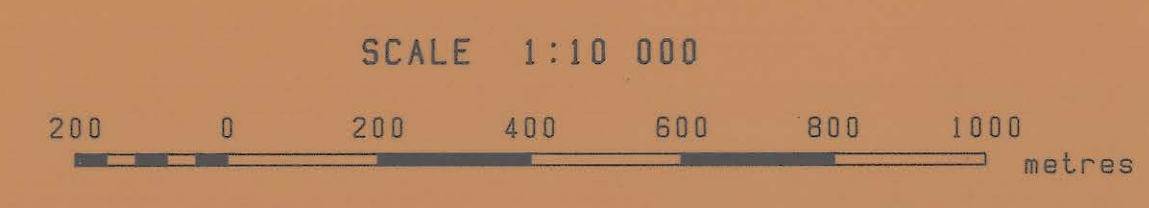
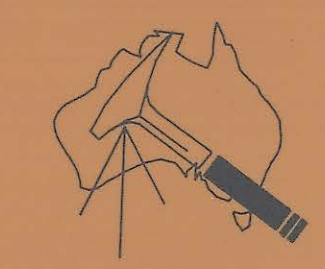
Plan 14

5 cm



KING ISLAND SPECIAL GRASSY 7717-IV-NW-4

GEOPEKO



INTEGRATED SURVEY GRID
ZONE 55/1

GRASSY

AIRBORNE GEOPHYSICAL SURVEY

Total Magnetic Intensity

FLIGHT DATA

Nominal traverse line separation: 150m
Nominal tie line separation: 1.5km
Nominal data spacing along flight lines: 70m
Nominal terrain clearance: 50m onshore - 15 m offshore
Navigation and recovery using Motorola Mini-Ranger MRS-3
Aircraft: Austrex Nomad N 22 B - Reg No: VH-FZP
Magnetometer Type: Sonotek 6039 in stinger

Survey Date: August 1980

MAP DATA

Contour Interval: 5nT
IGRF subtracted prior to contouring

Survey flown and compiled by Austrex International Ltd
Project management by Geopeko geophysical group

DRAWING NO: 6 229 S/B